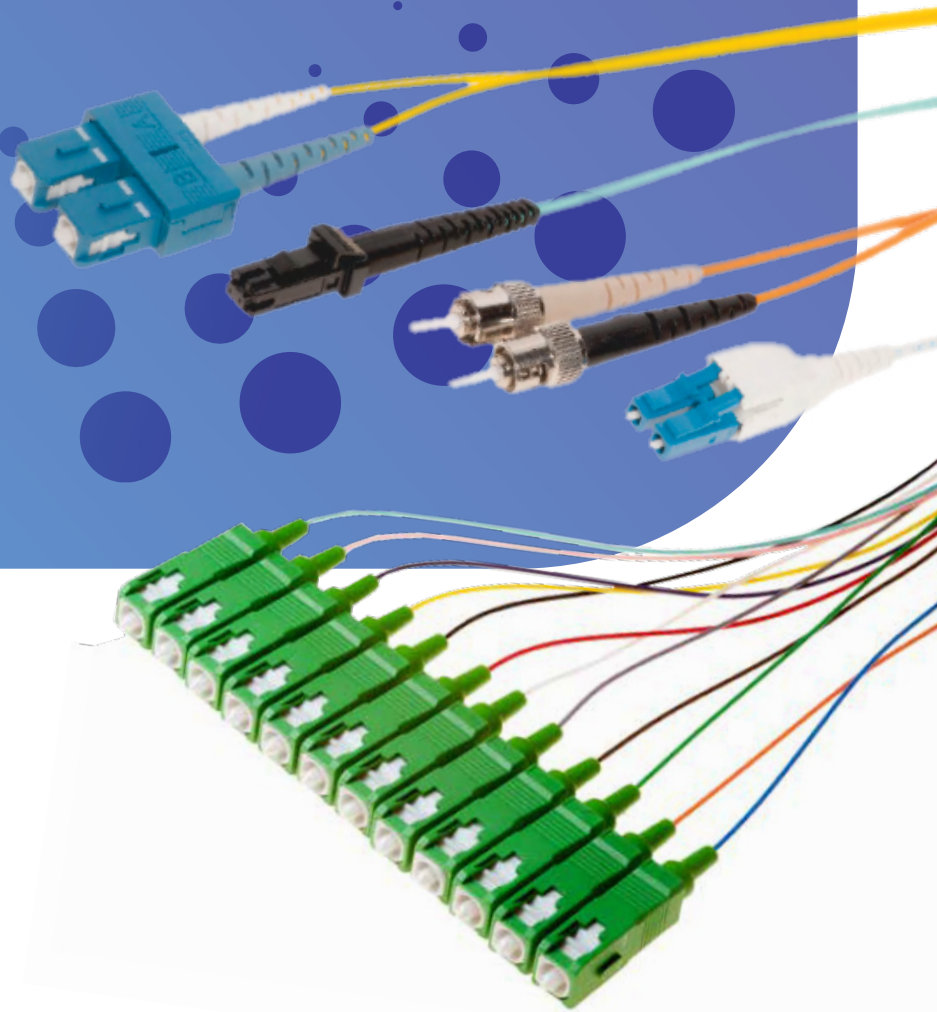


JCS-WB TECHNOLOGIES

Fibre Optic Patch Leads & Pigtails





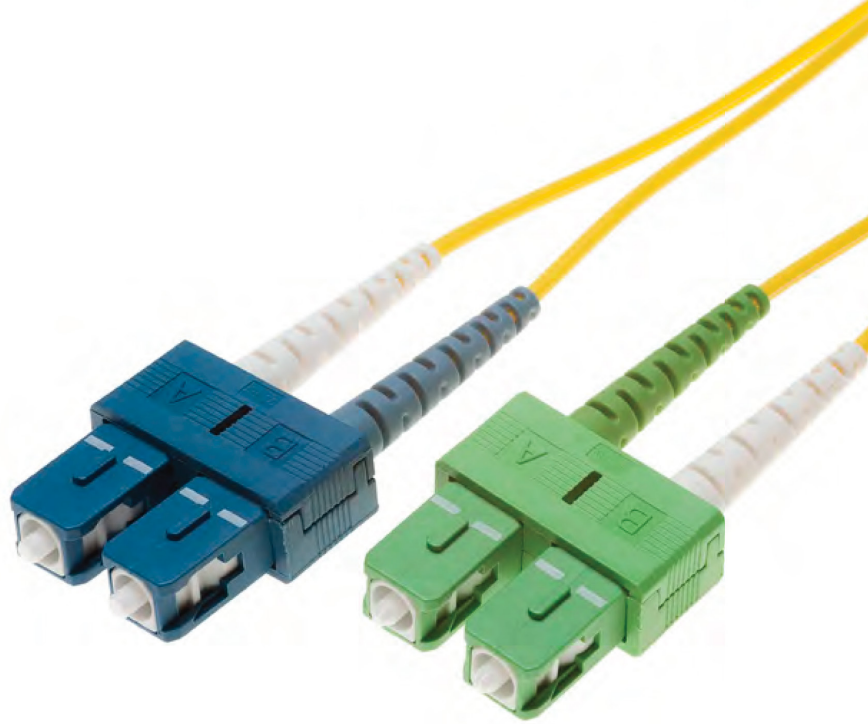
FIBRE OPTIC PATCH LEADS

APPLICATION

- Suitable for general indoor use, such as routing connections and patching systems
- Data centre equipment, cross connect and lead-ins
- Termination enclosure to equipment patching

FEATURES

- Resilient and flexible
- LSZH Jacket as stock standard
- Factory-terminated and tested
- Standards based testing provides traceable and repeatable results
- Ultra high performance zirconia ferrules
- Factory terminated under ISO9001 quality control procedures
- Interferometer testing for endface geometry
- Individually bagged and labelled
- Broad stock holding range
- Specialists in harsh environment / hybrid terminations
- RoHS Compliant
- Corning Glass
- 25 Year Warranty



JCS-WB Technologies manufactures and supplies high quality, low loss fibre optic leads and assemblies using only the highest grade components advanced inspection and characterisation tools.

All JCS-WB patch leads are 100% factory tested and hold a 25-year guarantee.

JCS-WB patch leads are by standard LSZH and come in a wide variety of connectors and lengths across all modes. IL is max 0.15db to ensure you receive high quality as a standard.

Please contact JCS-WB Sales if you require any special cable construction, connectors styles or mode specifications.

JCS-WB Technologies offers a full range including armoured patch leads, Flexi-Boot, LC Secured, reduced diameter and many other variants.

**JCS-WB Technologies
is ISO 9001:2015
Certified**



All JCS-WB and technology partner processes are certified to ISO9001, employing advanced test and measurement technology including Interferometer connector end face analysis and return loss testing compliant with and fully traceable to international standards. JCS-WB cable assemblies are machine polished using the highest quality components to ensure a consistent high quality, long lasting termination that exceeds performance requirements.

NOTE: If there is a particular product not listed that you require, please don't hesitate to contact the JCS-WB Technologies Sales and Support Team today



Cable / Fibre Mechanical and Environmental Specifications

Cable Parameters	Condition/Unit	3mm		2mm	
		Simplex	Duplex	Simplex	Duplex Fig 8
Temperature °C	Operating			-40/+85	
	Storage			-55/+85	
	Installation			-10/+60	
Impact Resistance	Impacts	1000		750	200
Flex Resistance	Cycles	7500			
Crush Resistance	N/100mm ²	500	1000	500	1000
Flame Retardancy		IEC 60332-1	IEC 60332-3	IEC 1034 1/2	IEC 60754-1/2
Diameter	mm	3	2.8*5.7	2	2.0 x 4.1
Weight	kg/km	6.8	13.2	3.5	8.2
Tensile Load	Short Term N	150	300	100	200
	Long Term N	80	200	60	100

JCS-WB Technologies Pigtails and Patch Leads meet the functional requirements of the following standards:

- GR-409-CORE
- TIA-568
- IEC61300-3-4
- GR-326-CORE
- ICEA-S-83-596
- TIA-598
- IEC61300-3-6
- IEC61753-1

D-STSTM-S2-2YL-S

CORE COUNT

S - SIMPLEX
D - DUPLEX

METRE LENGTH

S - STOCK/IMPORT
L - LOCAL TERM

CORD COLOUR

YL - YELLOW
OR - ORANGE
AQ - AQUA
EVT - ERICA VIOLET
BU - BLUE
BK - BLACK
RD - RED
GN - GREEN
PK - PINK
WH - WHITE

CONNECTOR TYPE SIDE A AND SIDE B

LC - LC/UPC	MTM - MTRJ MALE
LCU - LC UNIBOOT	MTF - MTRJ FEMALE
LCA - LC / APC	E2 - E2000 PC
LCUH - LC UNIBOOT	E2A - E2000/APC
HD	MU - MU
LCH - LC DUPLEX HD	ESC - ESCON
	DIN - DIN/PC
	HP - HFBR
SC - SC / UPC	
SCA - SC / APC	
ST - ST / UPC	
FC - FC / UPC	
FCA - FC / APC	

FIBRE MODE

S1 - OS1/OS2 G652D
S2 - OS1/OS2 G657A2
(Bend Insensitive)
M1 - OM1
M3 - OM3
M4 - OM4

CORDAGE DIAMETRE

2 - 2MM
3 - 3MM



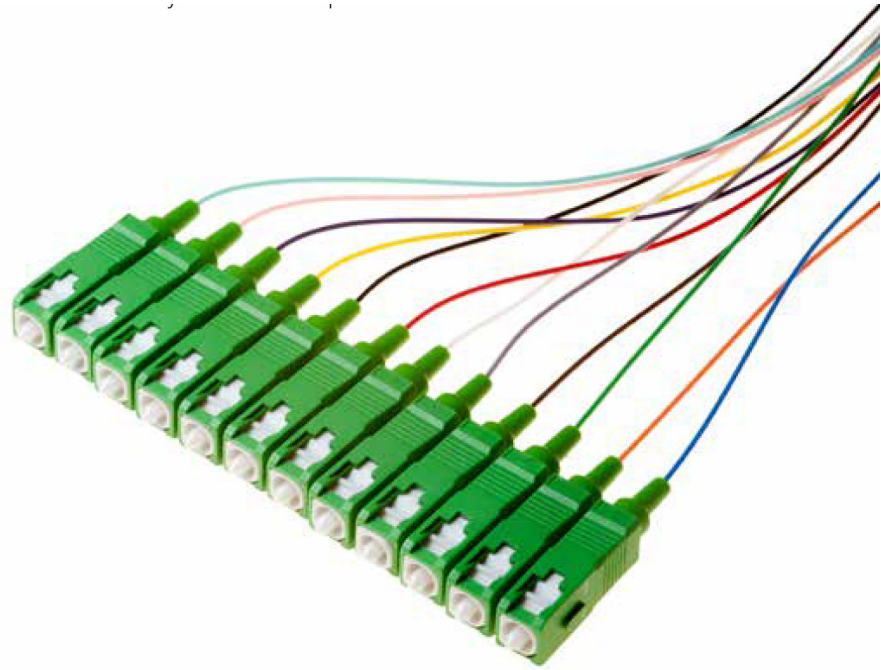
FIBRE OPTIC PIGTAILS

APPLICATION

- Termination of optical fibre via fusion splicing
- Temporary termination of fibre cable for acceptance testing

FEATURES

- Easy to strip and cleave
- LSZH buffer as standard
- Factory-terminated and tested
- Standards based testing provides traceable and repeatable results
- Ultra high performance zirconia ferrules
- Factory terminated under ISO9001 quality control procedures
- Interferometer testing for endface geometry
- Individually bagged and labelled
- Broad stock holding range
- Specialists in harsh environment / hybrid terminations
- RoHS Compliant
- Corning Glass



JCS-WB Technologies manufactures and supplies high quality, low loss fibre optic pigtails and assemblies using only the highest grade components, advanced inspection and characterisation tools.

JCS-WB fibre pigtails are by standard packaged in 6 or 12 pack, coloured as per TIA-598C colour code specification.

All JCS-WB fibre pigtails are 100% factory tested and packaged with test results.

JCS-WB stocks a broad range of pigtails in a variety of connector styles and fibre modes.

Please contact JCS-WB Sales if you require any special cable construction, connectors styles or mode specifications.

**JCS-WB Technologies
is ISO 9001:2015
Certified**



All JCS-WB and technology partner processes are certified to ISO9001, employing advanced test and measurement technology including Interferometer connector end face analysis and return loss testing compliant with and fully traceable to international standards. JCS-WB cable assemblies are machine polished using the highest quality components to ensure a consistent high quality, long lasting termination that exceeds performance requirements.

NOTE: If there is a particular product not listed that you require, please don't hesitate to contact the JCS-WB Technologies Sales and Support Team today



FIBRE OPTIC PATCH LEADS & PIGTAILS | JCS-WB TECHNOLOGIES |
SALES@JCS-WBT.COM.AU | +61 2 8878 6600 | JCS-WBT.COM.AU



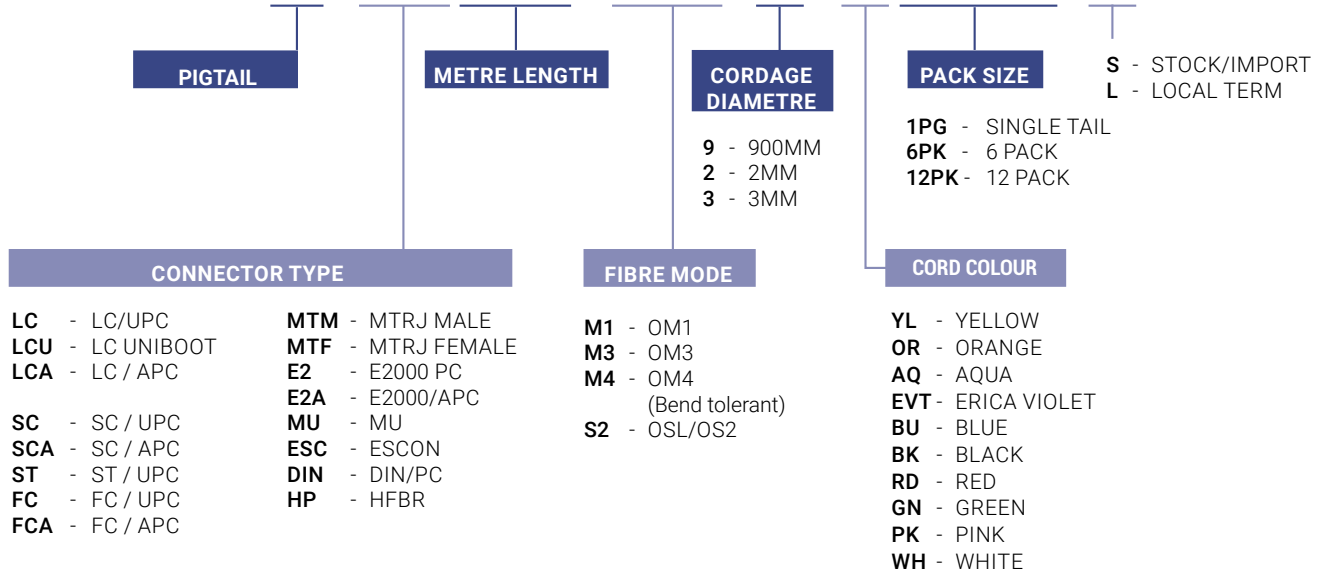
Cable / Fibre Mechanical and Environmental Specifications

Cable Parameters	Condition/Unit	
Temperature °C	Storage	-20/+70
Impact Resistance	Impacts	750
Flex Resistance	Cycles	7500
Crush Resistance	N/100mm ²	500
Flame Retardancy		IEC 60332-1, IEC 60332-3, IEC 1034 1/2, & IEC 60754-1/2
Diameter	mm	Diameter mm 0.900 standard [2mm & 3mm upon request]
Weight	kg/km	0.9
Tensile Load	N	6
Jacket Material		LSZH
Pack Sizes (fibres)		6 & 12 standard [Individual upon request]

JCS-WB Technologies Pigtailed and Patch Leads meet the functional requirements of the following standards:

- GR-409-CORE
- TIA-568
- IEC61300-3-4
- GR-326-CORE
- ICEA-S-83-596
- TIA-598
- IEC61300-3-6
- IEC61753-1

P-LC2M-M4-9-C6PK-S



NOTE: If there is a particular product not listed that you require, please don't hesitate to contact the JCS-WB Technologies Sales and Support Team today

FIBRE OPTIC CONNECTOR TYPES

Typical fibre connector interfaces are LC, SC, and ST in either multimode or single-mode applications. The matrix below refers to those commonly used in the Australian market, with custom lengths, colours and types available on request.

JCS-WB also has an in house supply and termination capability for harsh environment, military, tactical field industrial, mining and broadcast fibre leads and assemblies.



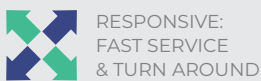
TECHNICAL SPECIFICATIONS

Connector Optical Specifications

Connector Types: LC, SC, ST, FC	Units	MM 850/1300 nm				SM 1310/1550 nm			
		Standard		Low Loss		UPC		APC	
		Typ	Max	Typ	Max	Typ	Max/Min	Typ	Max/Min
Max. Insertion Loss	dB	0.1	0.15	0.1	0.15	0.08	0.15	0.08	0.15
Min. Return Loss	dB	N/A				58	55	70	65

Cable / Fibre Optical Specifications

Fibre and Cable Optical Parameters			Multimode			Singlemode
	Condition	Units	OM1	OM3	OM4	OS1/OS2
Geometry	core/clad dia.	µm	62.5/125	50/125	50/125	9/125
Standard			TIA/EIA 492AAAA	ITU G651.1	ITU G651.1	ITU G657.A2
Attenuation	850/1300nm Typical	dB/km	3.0/1.0	3.0/1.0	3.0/1.0	0.36/0.22
	850/1300nm Maxv	dB/km	3.5/1.5	3.5/1.5	3.5/1.5	0.5/0.4
	1550nm	dB/km	-	-	-	0.25
Bandwidth	850nm (LED)	MHz.km	200	1500	3500	-
	1300nm (LED)	MHz.km	500	500	500	-
Bandwidth	850nm (Laser)	MHz.km	-	2000	4700	-
	1300nm (Laser)	MHz.km	-	500	500	-
Min Bend Radius	mm		25	25	25	7.5



RESPONSIVE:
FAST SERVICE
& TURN AROUND



ADVANCED
IN-HOUSE
ENGINEERING



FIBRE &
COPPER CABLE
MANUFACTURING



EXPERT
TECHNICAL
SUPPORT & ADVICE

LOCAL MANUFACTURE, SALES AND SOLUTIONS



JCS-WB TECHNOLOGIES PTY LTD | WWW.JCS-WBT.COM.AU |
UNIT 2, 2 HOLKER STREET | NEWINGTON | NSW 2127 |
T: +61 2 8878 6600 | F: +61 2 9808 2622 | SALES@JCS-WBT.COM.AU |
JCS-WBT.COM.AU